



Roca

Casablanca



# Casablanca

Interiors that look to the past to reinvent the present by using classic geometric shapes and patterns. Casablanca pays tribute to encaustic tiles while adding a modern twist.

Casablanca Gray 8"x9" Hexagon

Gres Stoneware

8"x8" 8"x9"



Casablanca Fond 8"x8"



Casablanca Trails 8"x8"

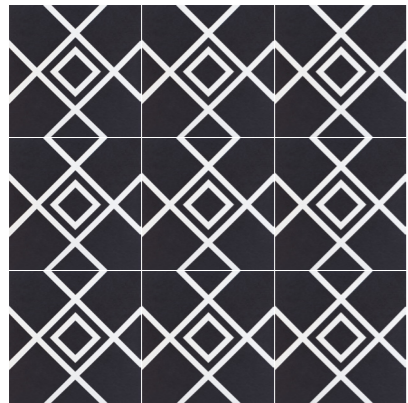


Casablanca Terrazzo Fun White 8"x8"

# Casablanca

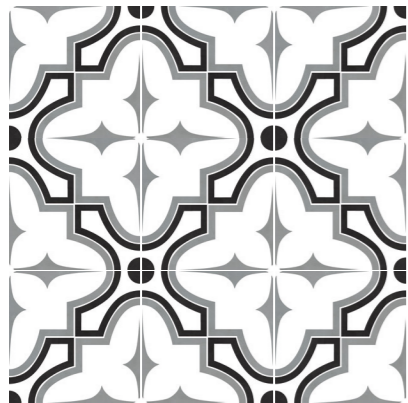
Gres Stoneware

8.2 |  | 8"x8"  
20x20 cm



Squares

8"x8"



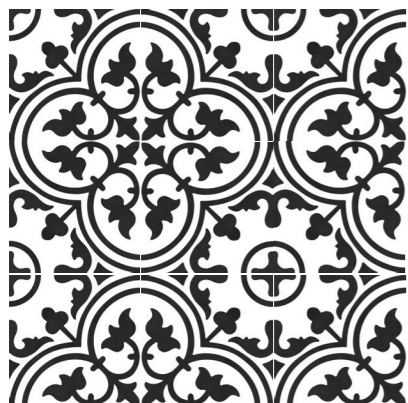
Market

8"x8"



Trails

8"x8"



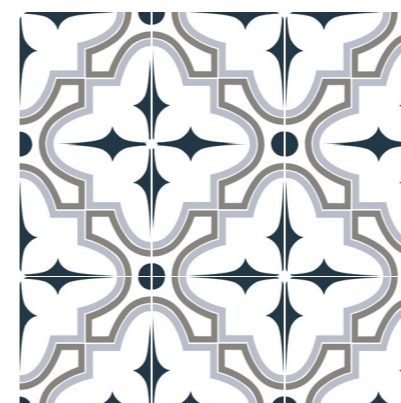
Heritage

8"x8"



Heritage Blue

8"x8"



Market Blue

8"x8"

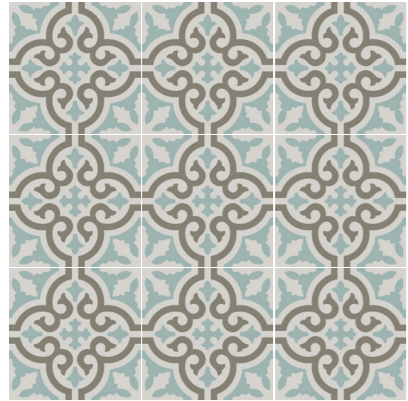


Casablanca Breeze 8"x8"

# Casablanca

Gres Stoneware

82 |  **8"x8"**  
20x20cm



Aqua

8"x8"



Fond

8"x8"



Casablanca Market Blue 8"x8"

# Casablanca

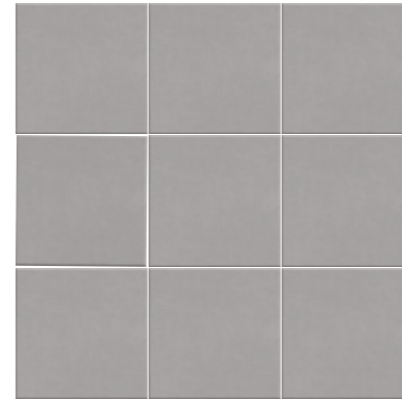
Gres Stoneware

82 |  **8"x8"**  
20x20cm



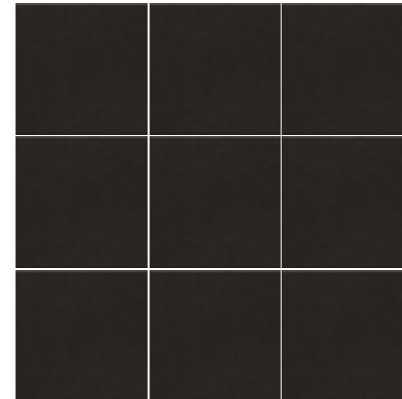
Solid White

8"x8"



Solid Gray

8"x8"



Solid Black

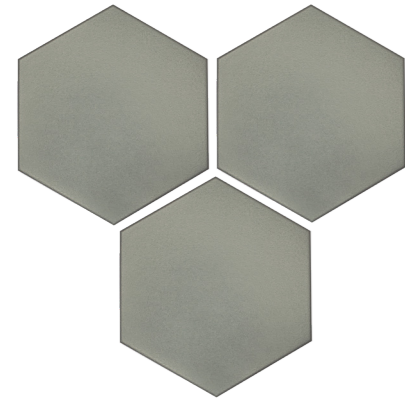
8"x8"


**8"x9"**  
 20x23cm



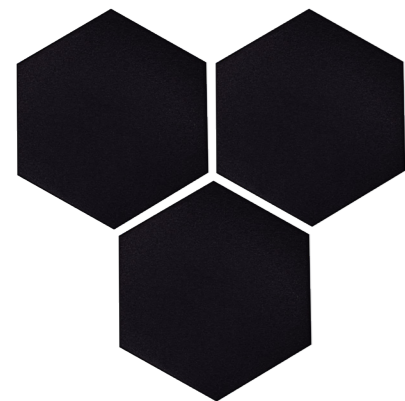
## Solid White


 8"x9"



## Solid Gray


 8"x9"



## Solid Black


 8"x9"

### Technical Specifications

CHARACTERISTICS	STANDARD	DECLARED ASTM
Water Absorption	C373	<3%
Break Strength	C648	Min. 350
Scratch Hardness	MOH's Scale	5
Chemical Resistance	C650	Unaffected
Frost Resistance	C1026	Resistant
Group	See FAQ's	3
Deep Abrasion - Unglazed Tiles	C1243	Pass
PEI - Glazed Tiles	C1027	2-4*
Minimum Bond Strength (PSI)	C482	165
Dynamic Coefficient of Friction (DCOF)	A137.1	>=0.42
Shade and Texture Rating	CTDA "V"	VI
Facial Dimensions	C499	Pass
Range of Thickness	C499	Pass
Warpage	C485	Pass
Wedging	C502	Pass

\*PEI is 2 for Casablanca Solid Black, Spice, Squares and Trails

\*PEI is 4 for Casablanca Aqua, Heritage, Market, Breeze, Solid White, Solid Gray and Terrazzos

### Packaging Info

Size	SF per carton	PC per carton
8"x8"	12.7	72
8"x9"	10.36	60